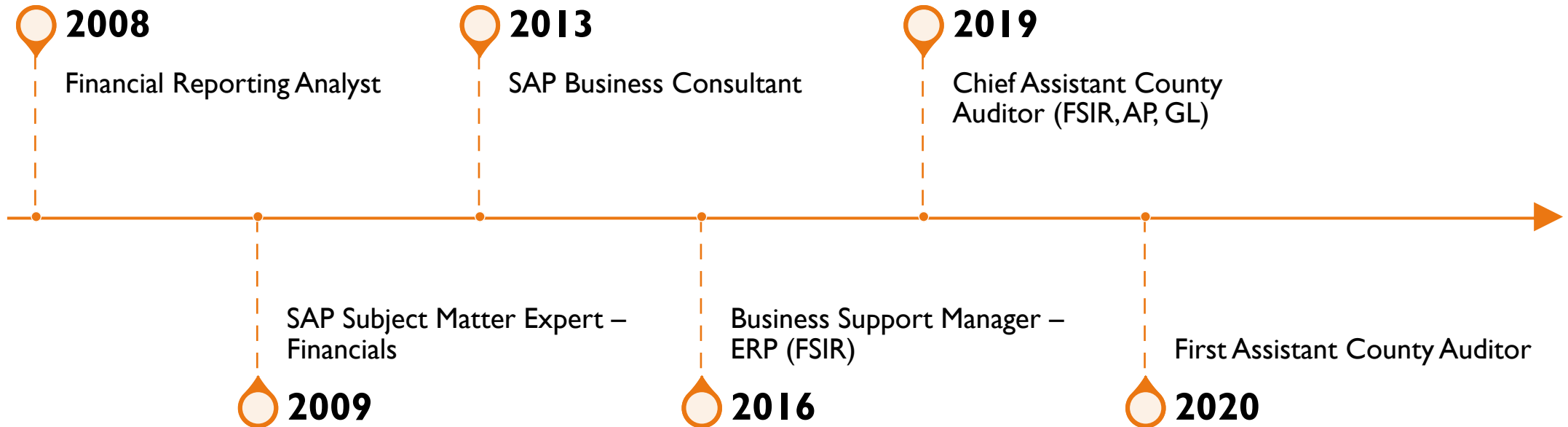


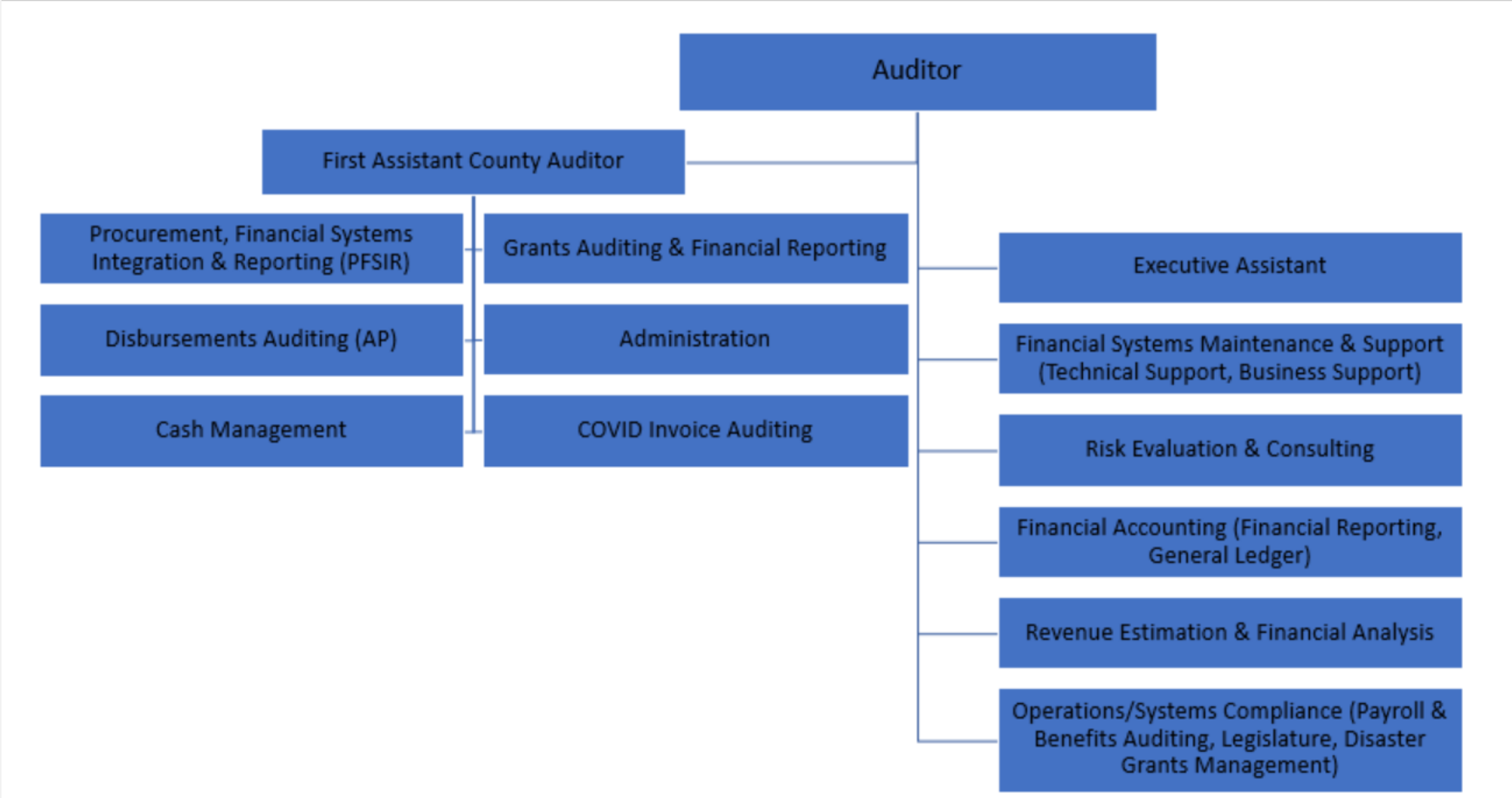
**FIRST ASSISTANT
COUNTY AUDITOR
TRAVIS COUNTY, TX**

KELLY ALLEN, CPA

TRAVIS COUNTY JOURNEY



AUDITORS OFFICE ORG CHART



"No matter what the job description says, your real job is to make the boss look good."

Lois Wyse



Grants manager promoted into a Special Project Position



Replacement moved to Emergency Management to help with COVID response grants



Rest of team was new/relatively inexperienced



Implemented major training program



Documented existing processes



Updated inefficient processes



Handled Year End

2 program Audits
Single Audit

LEADING GRANTS

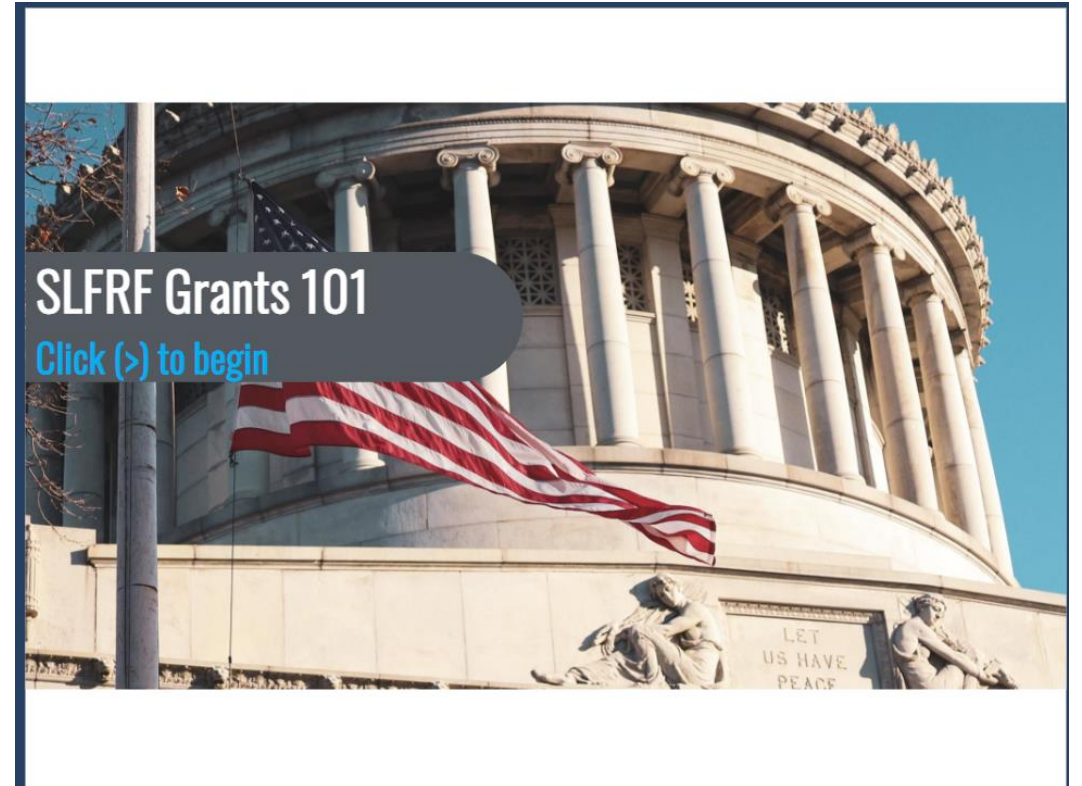
CORONAVIRUS HIT!!!

- CARES - \$61,147,507
- ERAP - \$11,540,000
- ERAP 2 - \$8,381,100
- SLFRF - \$247,450,630



SLFRF GRANTS REQUIREMENTS

- Attended Federal Grants Forum
- Documented Vital Requirements
- Shared with our County Attorney Department to use in Contract design
- Requested our Training Coordinator to design training content for Recipients of SLFRF funds



RESEARCH

- Work with multiple county departments (County Attorney, HHS, EMS, Planning and Budget).
- CARES/LFRF was new to ALL of us.
- Treasury guidance was continually being updated.
- These are all new grants.
- We've never done Supportive Housing Loans.
- Places to Research:
 - Other Entities
 - 2CFR 200
 - FAQs
 - Google



SAP SYSTEM KNOWLEDGE

- Financial Subject Matter Expert during SAP Implementation
- Helps me understand system issues and abilities
- Dual knowledge of accounting and systems help to understand both the HOW and the WHY
- Examples:
 - PFSIR team created a tool to pull all invoices and attachments to assist with FEMA billing.
 - Reports created to pull Vendor Payment information reduced ERAP reporting time by days.
 - Customized reports/hierarchies used to display both modified and full accrual financials.



CONTACT INFORMATION

Kelly Allen, CPA

First Assistant County Auditor

Kelly.allen@traviscountytexas.gov

512-854-6672