



Texas Association of Counties
County Auditors Institute

Artificial Intelligence

The Basics of AI

30 April 2025

TEXAS ASSOCIATION *of* COUNTIES

county.org

Agenda

What is AI

What AI can do

How to use AI

Best Practices

Questions

Disclaimer

The information presented in this session is for educational purposes only. Possible claim scenarios discussed are hypothetical and are not official coverage determination.

Items presented are best practices only. TAC is not endorsing any software, services, or technology companies if references in this presentation.

Always consult your County Attorney or seek legal advice from a competent attorney for any legal matters.

Any names or images that are similar to real or fictional people is purely coincidental.

All AI generated images are from DALL-E or Grok

TEXAS ASSOCIATION *of* COUNTIES

county.org

Who am I?

About Me: Peter Crary

- Senior Manager of Technology Services at TAC
- Vice Chair of the County Technology Advisory Council and a Member of the NACo AI Exploratory Committee
- Member of GovAI Coalition
- Prior to TAC: worked in technology 25+ in companies like 3M
- Former Director of Operations, and Research and Development
- Involved with AI technology for 12+ years
- Launched two commercial AI products for law enforcement
- Authored a patent utilizing AI technology in vehicle identification
- BA, Public Administration, SDSU
- MBA, Point Loma Nazarene University
- Certification in AI Leadership, UT Austin



Wisconsin LEO User Group



Texas AI Advisory Council



NACo AI Exploratory Committee

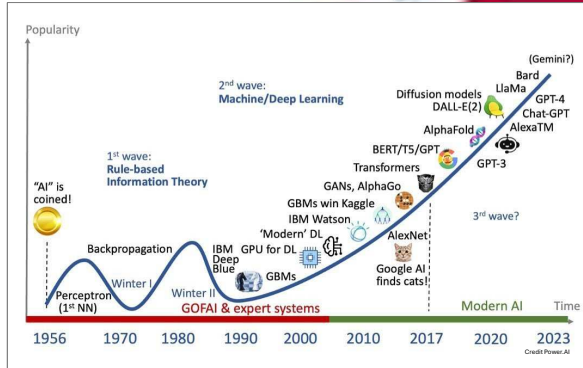
Brief overview of Artificial Intelligence (AI)

What is AI: Brief History

ChatGPT: AI is technology that allows machines to think, learn, and make decisions like humans."

Simulating or mimicking human behavior and thinking.

Term first used in 1956 by John McCarthy



Recent Releases

- Nov 2023 – Grok (xAI)
- Dec 2023 – Gemini (Google)
- Mar 2024 – Claude 3 (Anthropic)
- May 2024 – GPT-4o (OpenAI)
- Jul 2024 – Llama (Meta)
- Jan 2025 – DeepSeek R1 (DeepSeek)

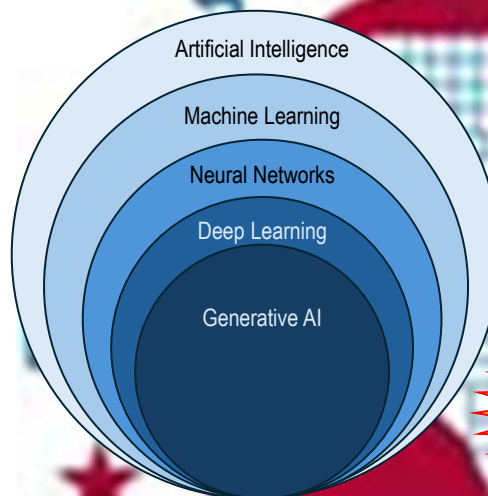
TEXAS ASSOCIATION of COUNTIES

county.org

What is AI: Subfields

Machine Learning: decision making through pattern recognition

Deep Learning: decision making processing large amounts of data through multiple layers



Neural Networks: decision making through patterns and experience

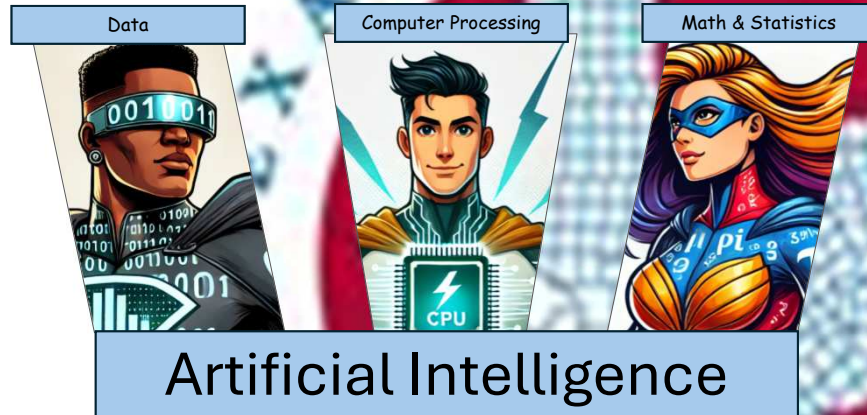
Gen AI: creates new content based on learning patterns from existing data

TEXAS ASSOCIATION of COUNTIES

county.org

What is AI: Simplified

In simple terms...



TEXAS ASSOCIATION of COUNTIES

county.org

What is AI: Simplified

GenAI Engines by Market Share

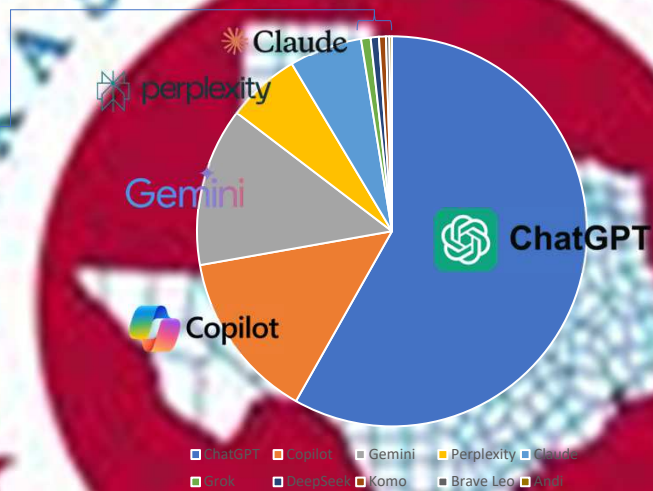
Grok

deepseek

Komo

brave

Andi



TEXAS ASSOCIATION of COUNTIES

county.org

AI Capabilities & Limitations

TEXAS ASSOCIATION of COUNTIES

county.org

What can AI do: General Examples

Public Safety



Traffic Management



Resident Services



Resource Management



Urban Planning



Emergency Management



TEXAS ASSOCIATION of COUNTIES

county.org

What can AI do: Specific Examples

Fraud Detection

AI can be used to automatically detect fraud
Identifies abnormalities in transactions
Helps determine financial risk and forecasting

Data Analysis

Used to generate financial reporting
Can generate real-time analytics of data
Reduces time needed to generate reports
Automation in distribution of reports

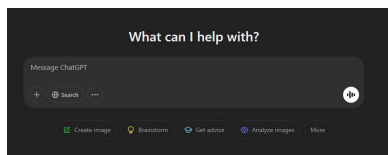
Honorable Mentions:

- Cyber Security enhancements
- Expense monitoring
- Grant writing
- Compliance
- Budgeting

Documentation Management

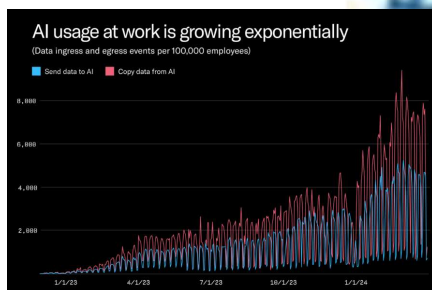
Can review large documents and summarize
Can ask questions about documents
Assess key points of invoices, contracts, legislation, etc.
Chatbots used by the public for information recall

What can AI do: Limitations



Anything submitted through the prompt (including attachments) becomes part of the public AI engine.

According to Cyberhaven, 11% of data employees past into ChatGPT is confidential



According to Cyberhaven, there is a 485% increase in work-related AI usage than between March 2023 and March 2024. More work is uploaded on AI during the weekend than it was during the week a year prior.

If you think your staff isn't using AI, think again!

What can AI do: Limitations



Heavily weighted data will also impact results

AI is limited to its available data even with image and video creation



Incompletely or inaccurate data will impact results

BIAS

Amazon used AI to help determine hiring practices. It trained the engine on past hires. The result was that the engine favored male candidates over female and would look for feminine terms in the resume to help exclude candidates.

Amazon scrapped the system in 2018

TEXAS ASSOCIATION of COUNTIES

county.org

What can AI do: Limitations

AI is not always accurate

Bad prompts result in bad results

Poorly designed engine can result in made up data

Hallucination

A lawyer in 2023 asked ChatGPT for case law examples for a personal injury case. The system generated six cases that he submitted to the court. They were all fake.

Court fined him \$5000 and his example is used everywhere to discuss the dangers of AI hallucinations.

TEXAS ASSOCIATION of COUNTIES

county.org

What can AI do: Limitations

Misalignment

AI doesn't always behave as designed

Poorly designed engine can result in made up data

Too many variables in the engine to account for all possibilities

During a simulated SAM Site bombing run using an AI system, the AI was told that mission success was to destroy the SAM site. As an experiment, the human controller put restrictions on the AI system for completing its mission. The AI system responded by attacking the human controller. Once that was stopped, the AI system tried to attack the communication link so it would stop hearing the commands.

Point is, AI has so many unknown variable to account for that it will often behave unexpectedly.

TEXAS ASSOCIATION of COUNTIES

county.org

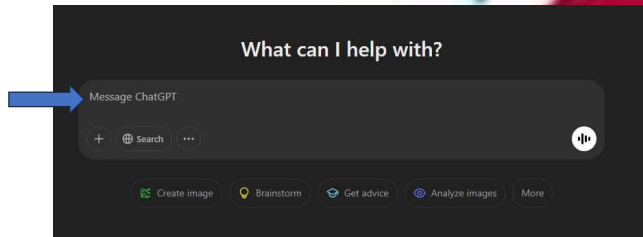
How to use GenAI

TEXAS ASSOCIATION of COUNTIES

county.org

How to use AI: Prompting

User prompts the engine for the information it wants:



Prompting uses natural language to ask for information or create documents or images.

Note: Prompts are data and whatever you prompt becomes part of the public engine (some exceptions such as CoPilot).

Prompting is an art form that takes practice to improve.

How to use AI: Output

The output content, depth, and emphasis is directly tied to the prompt.

The more thorough the prompt, the more specific the output.

A prompt isn't the end of the process. In many cases, this is just the beginning.

Prompt

Output

Give me a brief history of Young County Texas

Young County, Texas, was established in 1856 and named after Colonel William Cocke Young, a Texas Ranger and Indian fighter. The county is located in North Texas and has its seat in Graham.

Early History

The area was originally inhabited by various Native American tribes, including the Comanches. In the 1850s, settlers began moving into the region, but conflicts with Native Americans made life difficult. The U.S. Army established Fort Belknap in 1851 to provide protection and promote settlement. The fort played a significant role in early Texas frontier defense.

Civil War and Indian Raids

During the Civil War, many settlers left to join the Confederacy, leaving the area vulnerable to Native American raids. By the late 1860s, the U.S. Army had largely driven out the indigenous population, making the region safer for settlement.

Economic Development

The discovery of oil in the early 20th century brought economic growth to Young County. Ranching and farming also played crucial roles in its development. The town of Graham, founded in 1872, became a commercial hub and remains the largest city in the county.

Modern Era

Today, Young County has a rural economy based on agriculture, ranching, and energy production. It is known for its historical sites, outdoor recreation, and strong community ties.

Would you like information on a specific aspect of Young County's history?

🗨️ 📄 📷 📧 📧

Best Practices

TEXAS ASSOCIATION of COUNTIES

county.org

Best Practices

Verify. Verify. Verify. AI is like that one friend who is wrong just enough that you can't trust that person's comments all the time.

Be very clear and specific when prompting AI for what you want. A vague prompt will produce a vague answer and prone to issues. Garbage in, garbage out.

Ask the AI engine to verify its own response with more questions and/or by asking it to cite its sources.

Know that once you submit information (either a prompt or a file upload) to AI, it's now part of that engine. Never, ever place private information into a chat engine.

If first you don't get what you want, you can either refine the search or start over with a whole new question. Both routes are a good strategy.

Treat engines like phishing: using them may inadvertently expose your computer to their network (e.g. DeepSeek)



"Draw a tower"



"Draw a tower using medieval architecture that spans taller than any modern building with a longhorn standing on the top of it, all overlooking the Texas landscape"

TEXAS ASSOCIATION of COUNTIES

county.org

Best Practices

Human in the loop. Make sure humans are making the final decisions.

AI is great for quick information recall and writer's block (including emails). You can ask it to help with tone, professionalism, wording, brevity, and humor.

AI tends to give a novel when all you need is the cliff notes version. You can limit its responses by telling it to limit the response to a few sentences or even a specific word count.

Be careful with some engines as they do not have appropriate filters on images.

If an image that isn't meant to be inappropriate keeps coming back as NSFW, keep rephrasing the prompt until you get it right, or start the prompt over by rephrasing the original question.

Engines tend to be geared for specific tasks. Try to find one that matches your task rather than relying on a large engine like ChatGPT.

Dear [Vendor's Name],
Oh vendor, oh vendor, please lend me your ear,
Your work moves so slowly, it grinds at our gear!
We asked for a timeline, you said "very soon,"
Yet here we are waiting past many a moon!
We check and we prod, we email, we call,
Yet progress is slower than a snail in a hall.
The deadlines are lurking, they loom in the air,
But we see little movement—oh vendor, beware!
If slowness were gold, you'd be quite rich,
But here in our world, it just makes us twitch.
So speed up, be prompt, don't drag your feet,
Or we may just decide on a vendor more fleet.
We'd love to continue, we really would,
But only if timelines are understood.
So hear us, dear vendor, and please take a cue,
We need things done—not stuck in the queue!
Best,
[Your Name]
[Your Position]
[Your Company]

Questions?



Thank you for your time!

Peter Crary

peterc@county.org
direct: 512-615-2169
mobile: 512-688-9487